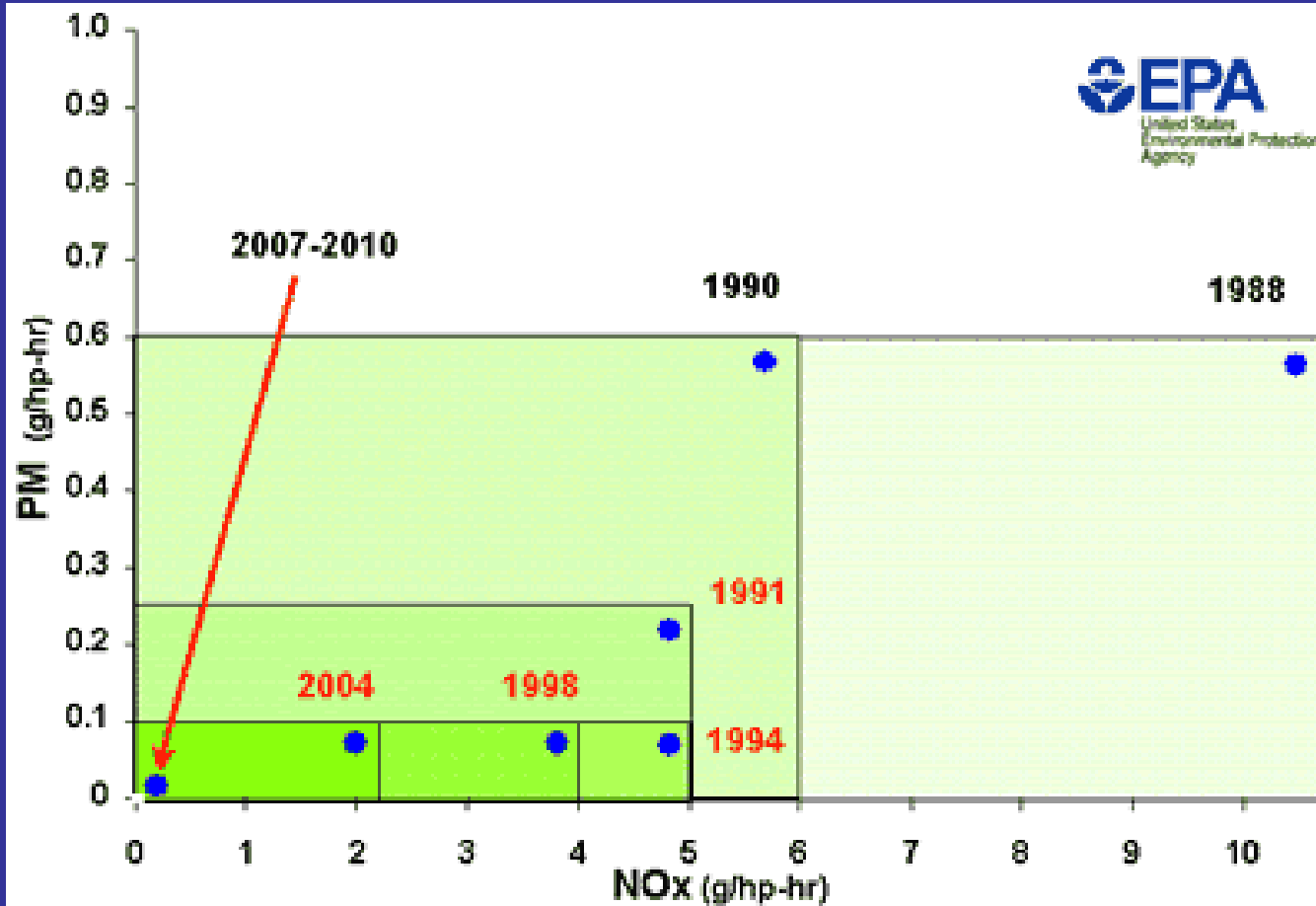




EPA's On-Road Heavy-Duty Vehicle Criteria Emission Program

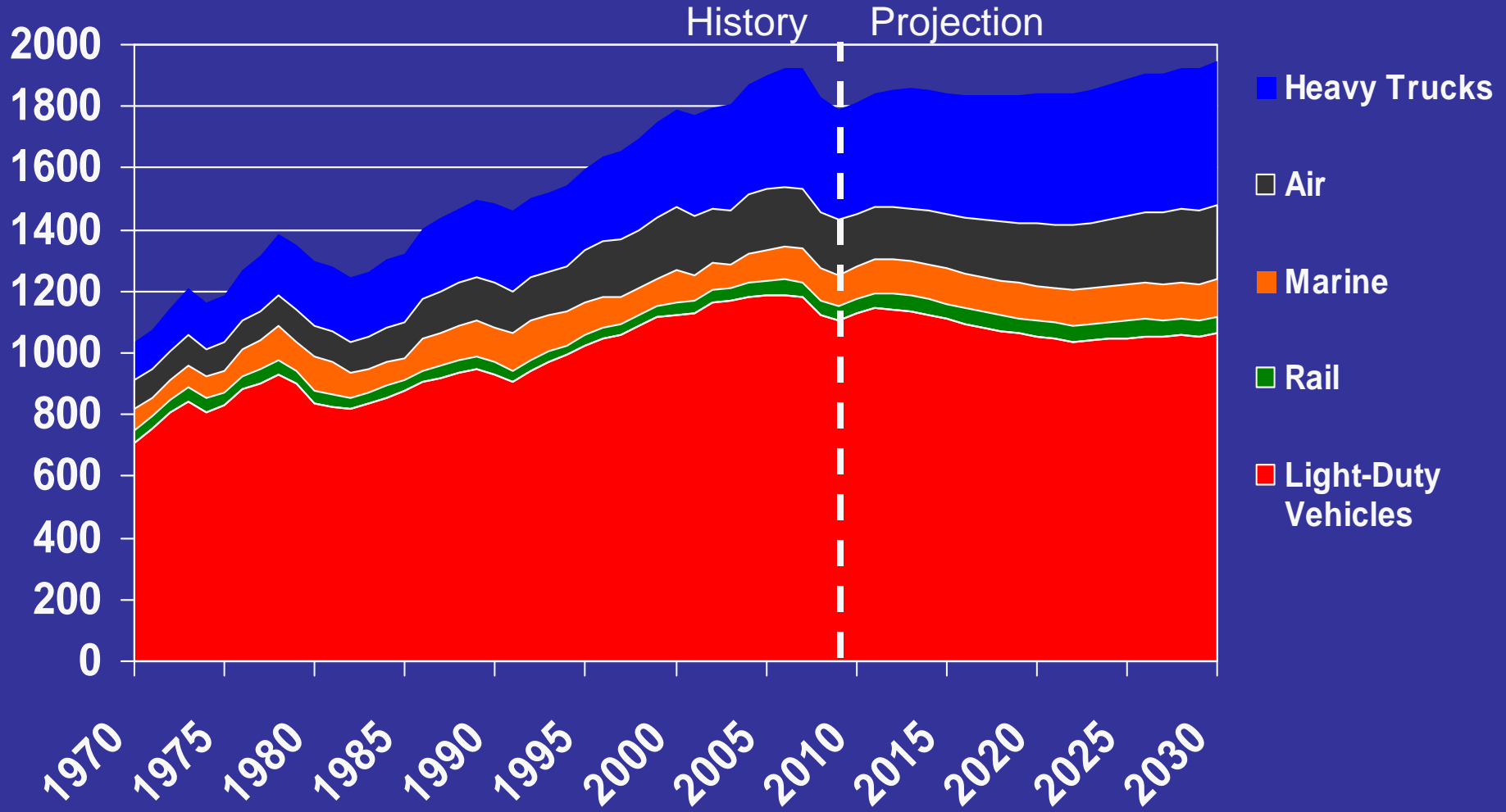


EPA's
"Moore
Law":
Cutting
Emissions
in Half
Every 3-6
Years



GHG Emissions by Transportation Mode

(Million Metric Tons CO2 Equivalent)



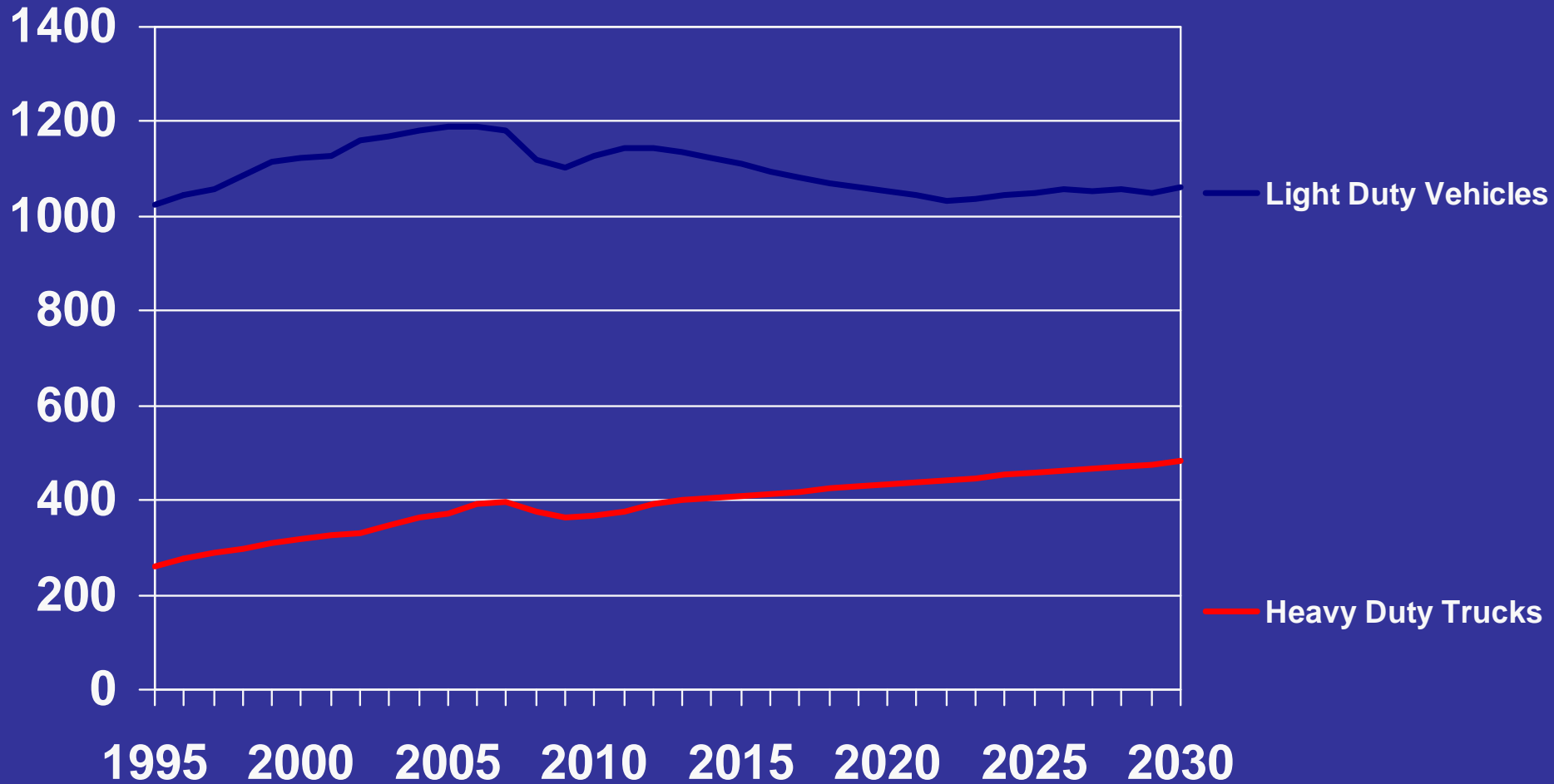
Source: History: *Transportation Energy Databook 28th Edition*
Projection: *Annual Energy Outlook 2009 Updated Reference Case d041409a*





Highway GHG Emissions by Mode

(Million Metric Tons CO₂ Equivalent)



Source: *Annual Energy Outlook 2009* Updated Reference Case d041409a





**Truck Hybrids:
"Big Bang for
the Buck"**

Fuel Savings:

**1 hybrid truck provides roughly the same
fuel savings
as this many hybrid cars.**



=



=



=

